

GUNLEATHER



2021

PRODUCT CATALOG





1791 GUNLEATHER

On December 15, 1791, the new United States of America ratified the Bill of Rights, the first ten amendments to the U.S. Constitution. This included the Second Amendment, promising individuals the right to bear arms. We chose to include the year 1791 in our name to signify our deep respect for those rights.

Our love and appreciation of the Second Amendment goes hand-in-hand with our passion for the art of gunleather and our reverence for the original patriots of this great nation.

To us, the right to keep and bear arms is a patriotic responsibility to ensure that our country, our cherished freedoms, and our families are protected. Given this awesome responsibility, we take pride in supplying our fellow citizens with superior, handcrafted holsters and belts that protect their firearms until the moment they are needed.

Four generations of professional leather artisans use only premium, 100% American Certified, Heavy Native Steerhide to handcraft our timeless, versatile, high-quality products.

ICON KEY

HOLSTER KEY



RIGHT HANDED



LEFT HANDED



AMBIDEXTROUS



INSIDE THE
WAISTBAND



OUTSIDE THE
WAISTBAND



OPTIC READY



PADDLE HOLSTER

COLOR KEY



SIGNATURE BROWN
SBR



CLASSIC BROWN
CBR



STEALTH BLACK
SBL



BLACK
BLK



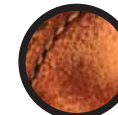
BROWN ON BLACK
BLB



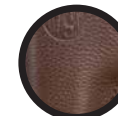
NIGHT SKY BLACK
NSB



VINTAGE SIGNATURE BROWN
VTG



VINTAGE CLASSIC BROWN
CVTG



BROWN
BRW

ULTRA CUSTOM

Multi Fit Holster



1791 Ultra Custom holsters are the most custom leather holsters ever created! With our patent pending technology, the Ultra Custom holster with Memory-Lok® Technology allows you to mold & re-mold your holster with the included molding tools for the ultimate in customization.

Made with ultra-soft cowhide and reinforced synthetic tuckable clip for IWB carry, it provides superior concealability and comfort.

Available in 6 sizes* that accommodate everything from revolvers to micro and full frame firearms.

*Sizes listed also include similar frames.



UCH-5



UCH-3

SIZE 0

Beretta: Tomcat 32, Pico 380 / **Colt:** 903 Pocket, Mustang Lite / **Kahr:** CW380 / **Kimber:** Micro 380, Micro 9 / **Sig Sauer:** P238, P938

SIZE 1

CZ: 2075 RAMI / **Keltec:** 380 / **Kahr:** CM/PM40, CM/PM9 / **Ruger:** LCP, EC9S / **S&W:** M&P Bodyguard / **Walther:** PPK

SIZE 2

J-Frame Revolvers / Colt: Cobra / **Rossi:** Small Frame Revolvers / **Ruger:** LCR / **S&W:** 38 Special, LCR, 638, 642, Bodyguard / **Taurus:** 85, 856

SIZE 3

1911 3" / Bersa: Thunder 380 / **Glock:** 42, 43, 43X / **Kimber:** Carry Ultra / **Ruger:** LC9, SR22 / **Sig Sauer:** P365, P230 / **Walther:** P22

SIZE 4

CZ: 75 / **Glock:** 17, 19, 19x, 22, 23, 25, 26, 27, 29, 30, 31, 32, 33 / **Ruger:** SR9, SR9c, SR40 / **S&W:** MP40, MP9, Shield / **Sig Sauer:** P225, P226, P228, P229, P239 / **Springfield:** XD9, XD40, XDS, XDE / **Taurus:** G2, PT111, PT24/7, 709 Slim

SIZE 5

H&K: 45c, P2000USPc, VP9sk / **Ruger:** American, P90, P95, Security-9 / **Sig Sauer:** M11A1, P229c, P229 Legion, P320, P320c / **Springfield:** XDMc

AVAILABLE SKUS

UCH-0-NSB-R
UCH-1-NSB-R
UCH-2-NSB-R
UCH-3-NSB-R
UCH-4-NSB-R
UCH-5-NSB-R

SIZE C

1911 3" / **Bersa:** Thunder 380 / **Glock:** 42, 43, 43x / **Kahr** CW45, K9 / **Kimber:** Micro 380, Micro 9, Ultra Carry / **Ruger:** LC9, SR22, SR1911 / **Sig Sauer:** P238, P365, Ultra Nitron / **Walther:** PPK

SIZE 1

1911 5"

SIZE 1s

1911 4"

SIZE 2.1

1911 Officer with Rail / **Glock:** 17, 19, 19x, 23, 25, 26, 27, 28, 29, 30, 32, 33, 45, 48 / **FN:** FNS-9 / **Ruger:** SR9, SR40, SR22 / **S&W:** MP9, MP40, MP40c, Shield, 5903 / **Sig Sauer:** P225-A1, P228, P229, P229c / **Springfield** XD9, XD40, XDS, XDE / **Taurus:** PT111, G2, G2c, 709 Slim / **Walther:** P99, P22, PPS, CCP

SIZE 2.4

Beretta: 92, 92fs, M9 / **CZ:** 75/75b, P09, P10f / **FN:** FN5.7, FNX, FNS 40 Longslide, 9 Longslide / **H&K:** VP tactical, VP40, HK 45, P30L, Mark 23, USP Tactical / **Ruger:** 3810, 3811, American, Security-9 / **Sig Sauer:** P220, P226, P227, P320, SP2022 / **Springfield:** XD Mod.2 4", XDM 3.8", XDM 4.5" / **Walther:** PPQ Q4 Tactical, PPQ 45

SIZE 2.4s

CZ: P01 Urban Grey, P10C, P10S / **FN:** FN509, FNS 40, FNS 40c, FNS 9, FNX 40, FNX 9 / **H&K:** 45c Tactical, P2000, USPc, VP9sk, VP 40, VP9, VP Tactical, P30 / **Sig Sauer:** M11-A1, P225 A-1, P229 Legion, P229c, P320c / **Springfield:** XDMc / **Walther:** Creed, PPQ M2, PPW 4", PPX

AVAILABLE SKUS

UCBH-C-NSB-R
UCBH-1-NSB-R
UCBH-1S-NSB-R
UCBH-2.1-NSB-R
UCBH-2.4-NSB-R
UCBH-2.4S-NSB-R



ULTRA CUSTOM OWB Belt Holster

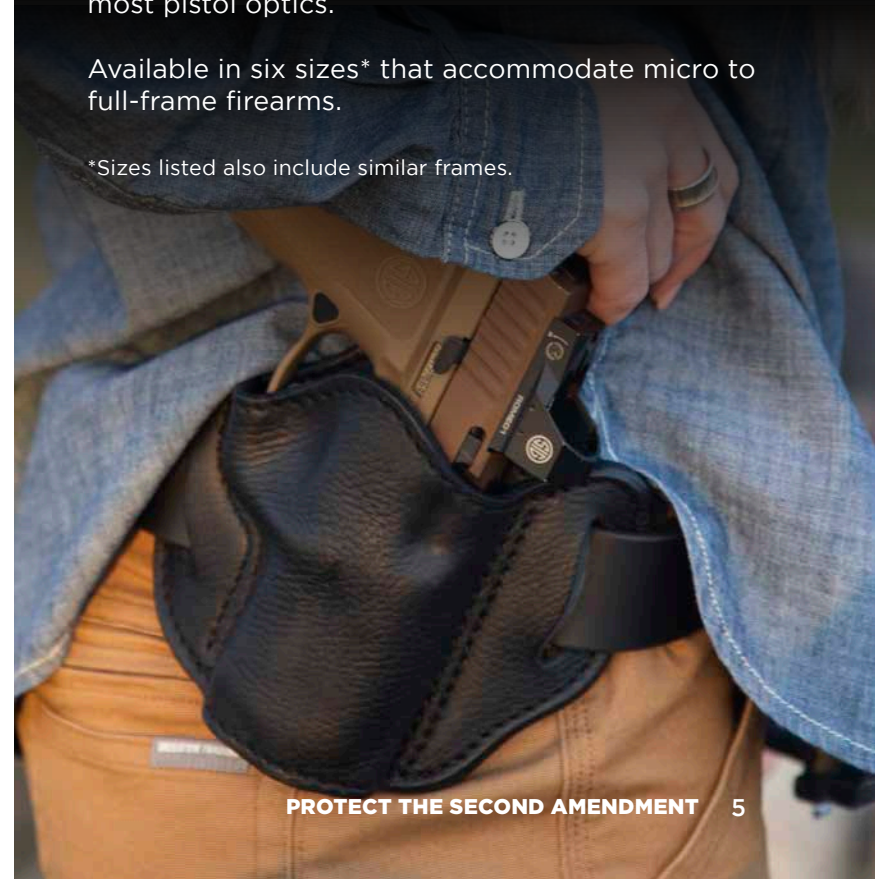
NEW
FOR
2021



Following up on the success of the Ultra Custom IWB, comes our Ultra Custom Belt Holster. Our patented Memory-Lok® technology allows you to mold and re-mold your holster for ultimate customization. Made with ultra-soft cowhide on the front and durable steer hide on the backside, the Ultra Custom Belt Holster is built tough to last. Also includes a high sweat guard for ultimate comfort and an optic cut that accommodates most pistol optics.

Available in six sizes* that accommodate micro to full-frame firearms.

*Sizes listed also include similar frames.



MOSSY OAK

Belt Holsters

NEW
FOR
2021



1791 Optic Ready belt holsters are handcrafted multi-fit designs that accommodate a wide range of firearms* with accompanying optics.

From full-sized 1911's to modern, compact semi-auto's, these holsters are built to mold perfectly to your handgun while standing up to the rigors of everyday wear. Their optic cut, open bottom design accommodates threaded barrels and the tall sweat guard ensures your optic is protected while providing a layer between you and your firearm.

All of our products are backed by our lifetime warranty and 100% customer satisfaction guarantee.

*Sizes listed also include similar frames.



Mossy Oak
- Black



Mossy Oak
- Brown

MOBH-C

1911: 3" / Bersa Thunder 380 / **Glock:** 42, 43, 43x / **Kahr:** CW45, K9 / **Kimber:** Micro 380, Micro 9, Ultra Carry / **Ruger:** LC9, SR22, SR1911 / **Sig Sauer:** P238, P365, Ultra Nitron / **Walther:** PPK

MOBH-1

1911: 4", 5" up to Half Rail

MOBH-2.1

1911: Officer with Rail / **Glock:** 17, 19, 19x, 23, 25, 26, 27, 28, 29, 30, 32, 33, 45, 48 / **FN:** FNS-9 / **Ruger:** SR9, SR40, SR22 / **S&W:** MP9, MP40, MP40c, Shield, 5903 / **Sig Sauer:** P225-A1, P228, P229, P229c / **Springfield:** XD9, XD40, XDS, XDE / **Taurus:** PT111, G2, G2c, 709 Slim / **Walther:** P99, P22, PPS, CCP

MOBH-2.4

Beretta: 92, 92fs, M9 / **CZ:** 75/75b, P09, P10f / **FN:** FN5.7, FNX, FNS 40 Longslide, 9 Longslide / **H&K:** VP tactical, VP40, HK 45, P30L, Mark 23, USP Tactical / **Ruger:** 3810, 3811, American, Security-9 / **Sig Sauer:** P220, P226, P227, P320, SP2022 / **Springfield:** XD Mod.2 4", XDM 3.8", XDM 4.5" / **Walther:** PPQ Q4 Tactical, PPQ 45

MOBH-2.4s

CZ: P01 Urban Grey, P10C, P10S / **FN:** FN509, FNS 40, FNS 40c, FNS 9, FNX 40, FNX 9 / **H&K:** 45c Tactical, P2000, USPc, VP9sk, VP 40, VP9, VP Tactical, P30 / **Sig Sauer:** M11-A1, P225 A-1, P229 Legion, P229c, P320 / **Springfield:** XDMc / **Walther:** Creed, PPQ M2, PPW 4", PPX

AVAILABLE SKUS

MOBH-C-BRW-R	MOBH-2.1-SBL-R
MOBH-C-SBL-R	MOBH-2.4-BRW-R
MOBH-1-BRW-R	MOBH-2.4-SBL-R
MOBH-1-SBL-R	MOBH-2.4s-BRW-R
MOBH-2.1-BRW-R	MOBH-2.4s-SBL-R

SIZE 0

Beretta: Tomcat 32, Pico 380 / **Colt:** 903 Pocket, Mustang Lite / **Kahr:** CW380 / **Kimber:** Micro 380, Micro 9 / **Sig Sauer:** P238, P938

SIZE 1

CZ: 2075 RAMI / **Kahr:** CM / PM40, CM / PM9 / **Keltec:** 380 / **Ruger:** LCP, EC9S / **S&W:** M&P Bodyguard / **Walther:** PPK

SIZE 2

Revolvers J-Frame / **Colt:** Cobra / **Rossi:** Small Frame Revolvers / **Ruger:** LCR / **S&W:** 38 Special, LCR, 638, 642, Bodyguard / **Taurus:** 85, 856

SIZE 3

1911 3" / **Bersa:** Thunder 380 / **Glock:** 42, 43, 43X / **Kimber:** Carry Ultra / **Ruger:** LC9, SR22 / **Sig Sauer:** P365, P230 / **Walther:** P22

SIZE 4

CZ: 75 / **Glock:** 17, 19, 19x, 22, 23, 25, 26, 27, 29, 30, 31, 32, 33 / **S&W:** MP40, MP9, Shield / **Sig Sauer:** P225, P226, P228, P229, P239 / **Springfield:** XD9, XD40, XDS, XDE / **Ruger:** SR9, SR9c, SR40 / **Taurus:** G2, PT111, PT24/7, 709 Slim

SIZE 5

H&K: 45c, P2000USPc, VP9sk / **Ruger:** American, P90, P95, Security-9 / **Sig:** Sauer: M11A1, P229c, P229 Legion, P320, P320c / **Springfield:** XDMc

AVAILABLE SKUS

FCD-0-BRW-R
FCD-1-BRW-R
FCD-2-BRW-R
FCD-3-BRW-R
FCD-4-BRW-R
FCD-5-BRW-R



FCD-3



FCD-5

FAIR CHASE

Handcrafted From American Whitetail Deer

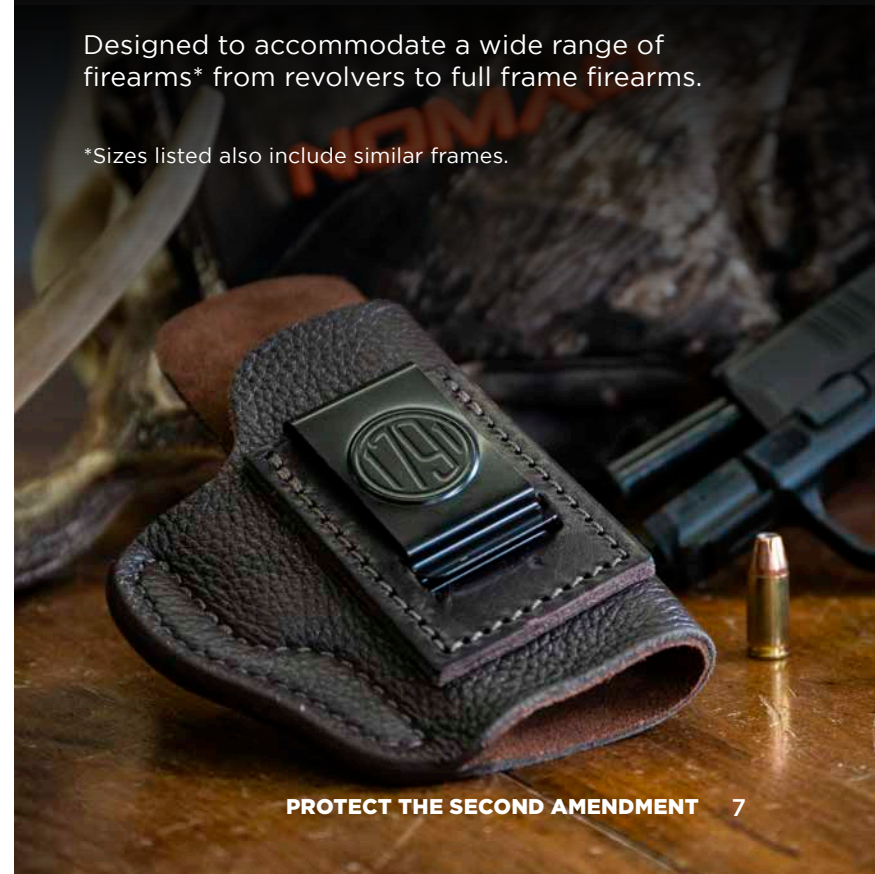


1791 Fair Chase holsters are made using wild and ethically hunted fair chase Whitetail deer hide. Together with our meticulous handcrafting and superior design, the Fair Chase holster delivers our most comfortable and concealable holster ever.

Deer hide's combination of resistance and flexibility is unmatched by any other type of leather, making it the finest of all wild animal leather.

Designed to accommodate a wide range of firearms* from revolvers to full frame firearms.

*Sizes listed also include similar frames.



SNAGMAG™

Concealed Magazine Holster



There's no such thing as Extra Ammo™

As firearms get smaller and smaller to increase concealability, the first thing they sacrifice is capacity.

SNAGMAG™ addresses this issue by creating an easy way to carry additional ammunition right in your pocket. The most obvious tactical advantage of the SNAGMAG™ is to double the ammunition that you're carrying with a small footprint and without loading more gear onto your belt. It incorporates a pocket clip to keep it out of sight and easily accessible.

Regardless of how you choose to carry your firearm, the need for more ammunition doesn't change. The SNAGMAG™ is always there in your pocket for a quick and easy reload.



AVAILABLE SKUS	MODELS
TAC-SNAG-101-L/R	1911 7 round / Kimber Ultra Aegis II
TAC-SNAG-102-L/R	1911 8 round/ Sig P220
TAC-SNAG-103-L/R	Bersa Thunder
TAC-SNAG-104-L/R	CZ 75 / Beretta 92 / Sig Sauer P226
TAC-SNAG-105-L/R	Glock 17, 22, 33
TAC-SNAG-106-L/R	Glock 19, 23, 32
TAC-SNAG-107-L/R	Glock 20, 21
TAC-SNAG-108-L/R	Glock 26, 27
TAC-SNAG-109-L/R	Glock 29, 30
TAC-SNAG-110-L/R	H&K P2000, USP Compact
TAC-SNAG-111-L/R	H&K P30, VP9
TAC-SNAG-112-L/R	Sig Sauer P227 45 ACP
TAC-SNAG-113-L/R	Kimber Solo 9mm
TAC-SNAG-114-L/R	Kel Tec PF9 / Ruger LC9 / BereZa Nano / Sig Sauer P938 Extended 7 round / Kimber Micro 9 Extended 7 round
TAC-SNAG-115-L/R	Walther PPQ, P99
TAC-SNAG-116-L/R	Beretta PX4 Storm
TAC-SNAG-117-L/R	Beretta PX4 Storm Compact
TAC-SNAG-118-L/R	Springfield EMP, XD's 9mm Extended 9 round
TAC-SNAG-119-L/R	Sig Sauer P232 / Kahr P380
TAC-SNAG-120-L/R	Sig Sauer P938 9/40, DB 9/40 / Kimber Micro 9mm - 6 round
TAC-SNAG-121-L/R	LCP / Sig Sauer P238 / Kel-Tec P3AT / Colt Mustang Pocketlite, DB380
TAC-SNAG-122-L/R	S&W M&P Full 9/40 / Sig Sauer P250, 320 17 Round
TAC-SNAG-123-L/R	S&W M&P Full 45 ACP
TAC-SNAG-124-L/R	Springfield XDm Compact, M&P Compact / Ruger SR 9/40 Compact / Sig Sauer P250 Compact / H&K P2000SK, P30SK

TAC-SNAG-125-L/R	S&W M&P Shield 9mm/40
TAC-SNAG-126-L/R	Springfield XD Subcompact 9/40 / SCCY CPX, / CZ RAMI / Walther P99 Compact / Taurus PT111/140
TAC-SNAG-127-L/R	Springfield XDs 9mm 7 round
TAC-SNAG-128-L/R	Kahr CW9/40, PM 9/40 / Taurus 709 Slim
TAC-SNAG-129-L/R	Springfield XD/XDm Full 45 ACP
TAC-SNAG-130-L/R	Springfield XD 9/40 Full Size / FN FNH, FNP 9/40 / Ruger P89, 95 / Sig Sauer SP2022
TAC-SNAG-131-L/R	Springfield XDm Full 9/40 / FN FNH FNS, FNX / Ruger SR9/40 Full
TAC-SNAG-132-L/R	Springfield XDs 45 5 round
TAC-SNAG-133-L/R	Walther PPS 9mm 7round /40 6 round
TAC-SNAG-134-L/R	Walther PPK 380 7 round
TAC-SNAG-135-L/R	S&W Bodyguard
TAC-SNAG-136-L/R	Glock 36
TAC-SNAG-137-L/R	Glock 42
TAC-SNAG-138-L/R	Kahr CW 45 ACP 6 round
TAC-SNAG-139-L/R	Kahr CW 45 ACP 7 round
TAC-SNAG-140-L/R	S&W 5900 Series
TAC-SNAG-141-L/R	Sig Sauer P239 9mm 8 round
TAC-SNAG-142-L/R	Sig Sauer P229 40/357
TAC-SNAG-143-L/R	Glock 43 (fits flush mount & +1)
TAC-SNAG-144-L/R	Sig Sauer 250, 320 - 15 Round
TAC-SNAG-145-L/R	Springfield XDs 45 Extended 7 Round
TAC-SNAG-146-L/R	Springfield XDs 9mm Extended
TAC-SNAG-147-L/R	Springfield XD Compact 45 ACP - 10 Round
TAC-SNAG-148-L/R	Springfield XDm Compact 45 - 9 round
TAC-SNAG-149-L/R	H&K P2000 SK
TAC-SNAG-150-L/R	Walther CCP
TAC-SNAG-151-L/R	1911 45 ACP - 10 Round
TAC-SNAG-152-L/R	S&W Shield 45 ACP
TAC-SNAG-153-L/R	Sig Sauer P365 - 10 round
TAC-SNAG-154-L/R	Sig Sauer P365 - 12 round
TAC-SNAG-155-L/R	Glock 43 +2 Extension (Glockstore, Striker Fire, Taran Tactical +3)
TAC-SNAG-156-L/R	Glock 43 +4 Extension (Glockstore only)
TAC-SNAG-157-L/R	Glock 26/27/33 Extended
TAC-SNAG-158-L/R	Glock 48/43X - 10 round

SNAGMAG™

CONCEALED MAGAZINE HOLSTER



OPTIC READY

Belt Holsters



1791 Optic Ready belt holsters are handcrafted multi-fit designs that accommodate a wide range of firearms* with accompanying optics.

From full-sized 1911's to modern, compact semi-auto's, these holsters are built to mold perfectly to your handgun while standing up to the rigors of everyday wear. Their optic cut, open bottom design accommodates threaded barrels and the tall sweat guard ensures your optic is protected while providing a layer between you and your firearm.

Enjoy a lifetime of superior carry with reinforced stitching, ensuring quality and security. All backed by our lifetime warranty and 100% customer satisfaction guarantee.

*Sizes listed also include similar frames.



OR-BH1



OR-BH2.1

OR-BH1

1911: 4", 5" up to Half Rail

Browning: HP

Colt: 1911 4" & 5"

Kimber: 1911 5"

Rock Island: 1911 4" & 5"

Sig Sauer: 1911 4" & 5"

Springfield: 1911 4" & 5"

OR-BH2.1

1911: Officer with Rail

Glock: 17, 19, 19x, 23, 25, 26, 27, 28, 29, 30, 32, 33, 45, 48

FN: FNS-9

Ruger: SR9, SR40, SR22

S&W: MP9, MP40, MP40c, Shield, 5903

Sig Sauer: P225-A1, P228, P229, P229c

Springfield: XD9, XD40, XDS, XDE

Taurus: PT111, G2, G2c, 709 Slim

Walther: P99, P22, PPS, CCP

AVAILABLE SKUS

OR-BH1-CBR-R

OR-BH1-SBL-R

OR-BH1-SBR-R

OR-BH2.1-CBR-R

OR-BH2.1-SBL-R

OR-BH2.1-SBR-R

OR-BH2.4

Beretta: 92, 92fs, M9

CZ: 75/75b, P09, P10f

FN: FN5.7, FNX, FNS 40 Longslide,
9 Longslide

H&K: VP tactical, VP40, HK 45,
P30L, Mark 23, USP Tactical

Ruger: 3810, 3811, American,
Security-9

Sig Sauer: P220, P226, P227, P320,
SP2022

Springfield: XD Mod.2 4", XDM 3.8",
XDM 4.5"

Walther: PPQ Q4 Tactical, PPQ 45



OR-BH2.4

OR-BH2.4s

CZ: P01 Urban Grey, P10C, P10S

FN: FN509, FNS 40, FNS 40c, FNS 9,
FNX 40, FNX 9

H&K: 45c Tactical, P2000, USPc,
VP9sk, VP 40, VP9, VP Tactical, P30

Sig Sauer: M11-A1, P225 A-1, P229
Legion, P229c, P320

Springfield: XDMc

Walther: Creed, PPQ M2, PPW 4", PPX



OR-BH2.4s

AVAILABLE SKUS

OR-BH2.4-CBR-R

OR-BH2.4-SBL-R

OR-BH2.4-SBR-R

OR-BH2.4S-CBR-R

OR-BH2.4S-SBL-R

OR-BH2.4S-SBR-R



PADDLE

Optic Ready Paddle Holsters



1791 Paddle holsters include an adjustable cant for greater comfort and wearability. Our multi-fit* paddle designs allow for a quick on and off while out and about. Sizes listed also include similar frames.

Optic Ready Paddle Holsters provide comfort and adaptability with a built in optic cut. It also protects your optic with the built in sweat guard.

*Sizes listed also include similar frames.



OR-PDH-C



OR-PDH-1



OR-PDH-C



OR-PDH-1

OR-PDH-C

1911: 3"

Bersa: Thunder 380

Glock: 42, 43, 43x

Kahr: CW45, K9

Kimber: Micro 380, Micro 9, Ultra Carry

Ruger: LC9, SR22, SR1911

Sig Sauer: P238, P365, Ultra Nitron

Walther: PPK

AVAILABLE SKUS

OR-PDH-C-CBR-R

OR-PDH-C-SBL-R

OR-PDH-C-SBR-R

OR-PDH-1

1911: 4", 5" up to Half Rail

Browning: HP

Colt: 1911 4" & 5"

Kimber: 1911 5"

Rock Island: 1911 4" & 5"

Sig Sauer: 1911 4" & 5"

Springfield: 1911 4" & 5"

AVAILABLE SKUS

OR-PDH-1-CBR-R

OR-PDH-1-SBL-R

OR-PDH-1-SBR-R



OR-PDH-2.1



OR-PDH-2.4



OR-PDH-2.4s



PDH-R1



OR-PDH-2.1



OR-PDH-2.4



OR-PDH-2.4s



PDH-R2

OR-PDH-2.1

1911: Officer with Rail

FN: FNS-9

Glock: 17, 19, 19x, 23, 25, 26, 27, 28, 29, 30, 32, 33, 45, 48

Ruger: SR9, SR40, SR22

S&W: MP9, MP40, MP40c, Shield, 5903

Sig Sauer: P225-A1, P228, P229, P229c

Springfield: XD9, XD40, XDS, XDE

Taurus: PT111, G2, G2c, 709 Slim

Walther: P99, P22, PPS, CCP

AVAILABLE SKUS

OR-PDH-2.1-CBR-R

OR-PDH-2.1-SBL-R

OR-PDH-2.1-SBR-R

OR-PDH-2.4

Beretta: 92, 92fs, M9

CZ: 75/75b, P09, P10f

FN: FN5.7, FNX, FNS 40

Longslide, 9 Longslide

H&K: VP tactical, VP40, HK 45, P30L, Mark 23, USP Tactical

Ruger: 3810, 3811, American, Security-9

Sig Sauer: P220, P226, P227, P320, SP2022

Springfield: XD Mod.2 4", XDM 3.8", XDM 4.5"

Walther: PPQ Q4 Tactical, PPQ 45

AVAILABLE SKUS

OR-PDH-2.4-CBR-R

OR-PDH-2.4-SBL-R

OR-PDH-2.4-SBR-R

OR-PDH-2.4s

CZ: P01 Urban Grey, P10C, P10S

FN: FN509, FNS 40, FNS 40c, FNS 9, FNX 40, FNX 9

H&K: 45c Tactical, P2000, USPc, VP9sk, VP 40, VP9, VP Tactical, P30

Sig Sauer: M11-A1, P225 A-1, P229 Legion, P229c, P320c

Springfield: XDMc

Walther: Creed, PPQ M2, PPW 4", PPX

AVAILABLE SKUS

OR-PDH-2.4S-CBR-R

OR-PDH-2.4S-SBL-R

OR-PDH-2.4S-SBR-R

PDH-R1

Colt: Cobra

Revolvers: J-Frame

Rossi: Small Frame Revolvers

Ruger: LCR

S&W: 38 Special, LCR, 638, 642, Bodyguard

Taurus: 85, 856

AVAILABLE SKUS

PDH-R1-CBR-R

PDH-R1-SBL-R

PDH-R1-SBR-R

PDH-R2

Revolvers: K

and L Frame

Ruger: GP100

S&W: K Frame, 686

AVAILABLE SKUS

PDH-R2-CBR-R

PDH-R2-SBL-R

PDH-R2-SBR-R



Kydex Paddle Holsters



1791 Tactical OWB Kydex Paddle holsters include excellent build quality and adjustable cant and retention. The added paddle allows for a quick on and off and provides an uncommon ease of use.

In addition to being designed to fit threaded barrels, optics, and raised iron sights, they offer an adjustable cant, adjustable retention, and an integrated concealment wing that increases comfort and concealability.

Made in USA



TAC-PDH
P320



TAC-PDH
P365

TAC-PDH GLOCK

Glock: 26/27/33, 19/23/32, 17/22/31, 34/35, 19X, 45, Gen 3, Gen 4 and Gen 5 models

TAC-PDH P365

Sig Sauer: P365

TAC-PDH P320

Sig Sauer: M17, P320c, P320 Carry, P320 Fullsize, P320 RX Compact, P320 RX Fullsize, P320 Tacops, P320 X-Carry, P320 X-Five Fullsize, P320 X-VTAC, XM179mm/.40cal models only

TAC-PDH CZP10

CZ: P10C, P10F, P10S 9mm/.40cal models

TAC-PDH GLOCK43

Glock: 43, 43X

TAC-PDH SHIELD

S&W: Shield - 9mm/.40cal 1.0 & 2.0 Models

TAC-PDH XDS

Springfield: XDS - 9mm/.40-cal/.45acp - 3.3" & 4.0" Barrel Lengths, Mod 1 and Mod 2 Models

TAC-PDH 1911

All Government Frame 1911's - All Barrel Lengths - All Calibers Will Not Fit 1911 w/ Picatinny Rail

AVAILABLE SKUS

TAC-PDH-OWB-Glock-BLK-R
TAC-PDH-OWB-P365-BLK-R
TAC-PDH-OWB-P320-BLK-R
TAC-PDH-OWB-CZP10-BLK-R
TAC-PDH-OWB-GLOCK43-BLK-R
TAC-PDH-OWB-SHIELD-BLK-R
TAC-PDH-OWB-XDS-BLK-R
TAC-PDH-OWB-1911-BLK-R



TAC-IWB GLOCK

Glock: 26/27/33, 19/23/32, 17/22/31, 34/35, 19X, 45, Gen 3, Gen 4 and Gen 5 models

TAC-IWB P365

Sig Sauer: P365

TAC-IWB P320

Sig Sauer: M17,P320c,P320 Carry, P320 Fullsize, P320 RX Compact, P320 RX Fullsize, P320 Tacops, P320 X-Carry, P320 X-Five Fullsize, P320 X-VTAC,XM179mm/.40cal models only

TAC-IWB CZP10

CZ: P10C, P10F, P10S 9mm/.40cal models

TAC-IWB GLOCK43

Glock: 43, 43X

TAC-IWB SHIELD

S&W: Shield - 9mm/.40cal 1.0 & 2.0 Models

TAC-IWB XDS

Springfield: XDS - 9mm/.40-cal/.45acp - 3.3" & 4.0" Barrel Lengths Mod 1 and Mod 2 Models

TAC-IWB 1911

All Government Frame 1911's - All Barrel Lengths - All Calibers Will Not Fit 1911 w/ Picatinny Rail

AVAILABLE SKUS

TAC-IWB-GLOCK-BLK-R

TAC-IWB-P365-BLK-R

TAC-IWB-P320-BLK-R

TAC-IWB-CZP10-BLK-R

TAC-IWB-GLOCK43-BLK-R

TAC-IWB-SHIELD-BLK-R

TAC-IWB-XDS-BLK-R

TAC-IWB-1911-BLK-R



TAC-IWB
GLOCK



TAC-IWB
1911

IWB Kydex Holsters



1791 Tactical IWB Kydex holsters represent a comfortable and dependable solution for everyday concealed carry.

The lightweight, slim design combines multiple features not found in most holsters for a customized, multi-position fit.



PROTECT THE SECOND AMENDMENT 15

2WH

Slim, low-profile holster fits firearms with and without small lights and lasers



The 2-Way Holster* provides one special feature not found in your everyday leather holster offerings; it's adjustable to accommodate small lights and lasers that attach to the front of the trigger guard. The 2-Way Holster is made with certified, American Heavy Native Steerhide using a slim, low-profile holster design that reduces printing and is excellent for concealment.

3WH

Ambidextrous Multi-Fit Holster Built for Comfort



When multiple holsters aren't an option the 1791 Gunleather 3-Way OWB* Concealment Holster answers the call with three carry options for both right and left-handed people totaling 6 versatile positions. The carry positions are vertical strong side, horizontal small-of-back, or weak side cross-draw.

The design on this holster is low-profile for easy concealment and it can be easily modified to accommodate certain small lights and lasers.

*Sizes listed also include similar frames.



2WH-2



3WH-1

SIZE 1

Browning: HP

Colt: 1911 3" & 4"

Kimber: 1911 3" & 4"

Sig Sauer: 1911 3" & 4"

SIZE 2

Glock: 42, 43

Keltec: 380, P11

Ruger: LCP

S&W: Bodyguard

Sig Sauer: P365

SIZE 3

Browning: 26, 25, 27, 29, 30, 33, 48

Ruger: LC9, SR9c, SR40, SR22

Sig Sauer: P225

S&W: MP9, Shield

Walther: PPS, CCP, P22

AVAILABLE SKUS

2WH-1-SBL-R	3WH-1-SBL-A
2WH-1-SBL-L	3WH-1-CBR-A
	3WH-1-SBR-A
2WH-2-SBL-R	3WH-1-VTG-A*
2WH-2-SBL-L	
	3WH-2-SBL-A
2WH-3-SBL-R	3WH-2-CBR-A
2WH-3-SBL-L	3WH-2-SBR-A
	3WH-2-VTG-A*
2WH-4-SBL-R	
2WH-4-SBL-L	3WH-3-SBL-A
	3WH-3-CBR-A
2WH-5-SBL-R	3WH-3-SBR-A
2WH-5-SBL-L	3WH-3-VTG-A*
	3WH-4-SBL-A
	3WH-4-CBR-A
	3WH-4-SBR-A
	3WH-4-VTG-A*
	3WH-5-SBL-A
	3WH-5-CBR-A
	3WH-5-SBR-A
	3WH-5-VTG-A*

*Vintage finishes (CVTG & VGT) have limited availability

SIZE 4

Glock: 26, 27, 28, 29, 30, 33, 39

Sig Sauer: P228, P239

Springfield: XDS, XDE, XD (9 and 40 cal.)

Taurus: G2, G2c, 709 slim

Walther: PPS, CCP

SIZE 5

Beretta: 92s, M9, Px4Storm

CZ: 75, P10, P07, P01

Glock: 17, 19, 20, 21, 31, 32, 38, 45

H&K: 40c, P2000, VP9, VP40

Ruger: P95, American, SR9, SR40

S&W: MP9, MP40, MP45

Sig Sauer: P226, P229, P320c, P220

Springfield: XD9, XD40, XDM

Styer: M9-A1

Taurus: PT24/7, PT111

Walther: P99, PPQ

AVAILABLE SKUS

4WH-1-SBL-R

4WH-1-SBL-L

4WH-1-CBR-R

4WH-1-VTG-R*

4WH-1-SBR-R

4WH-1-CVTG-R*

4WH-2-SBL-R

4WH-2-SBL-L

4WH-2-CBR-R

4WH-2-VTG-R*

4WH-2-SBR-R

4WH-3-SBL-R

4WH-3-SBL-L

4WH-3-CBR-R

4WH-3-VTG-R*

4WH-3-SBR-R

4WH-4-SBL-R

4WH-4-SBL-L

4WH-4-CBR-R

4WH-4-VTG-R*

4WH-4-SBR-R

4WH-5-SBL-R

4WH-5-SBL-L

4WH-5-CBR-R

4WH-5-VTG-R*

4WH-5-SBR-R



4WH-3



4WH-3

4WH

Ideal Balance of Protection and Comfort Delivers Four Distinct IWB/OWB Carry Positions



The best-selling 4-Way Concealment & Belt Leather Holster features multi-fit engineering that allows for a wide variety of firearms in ONE holster.*

With this multi-position holster, simple adjustments allow for your particular carry needs throughout the day. This is a low-profile holster, which allows you to conceal with convenience in vertical, horizontal, cross-draw, or IWB carry. In addition, this holster is designed to allow the user to modify it to fit certain small lights and laser attachments.

*Sizes listed also include similar frames.



BH

Open Top Leather Belt Holster



The 1791 Gunleather assortment of **Open Top Belt Holsters** caters to a variety of popular and classic sidearms.

From full-sized 1911's with or without rails, to modern, compact semi-auto's, these holsters are built to mold perfectly to your handgun* while standing up to the rigors of everyday wear.

Available in assorted colors, choose the Open Top Belt Holster that best matches your gun and attire.

Project Stealth OWB holsters combine sophisticated, patented, flexible, woven carbon fiber and premium American Heavy Native Steerhide for a contemporary, stylish holster that's both durable and flexible.

*Sizes listed also include similar frames.



CF-BHC



CF-BH1



BHC

Bersa: Thunder 380

Colt: 1911 3"

Glock: 42, 43

Kimber: Micro 9, Ultra Carry

Ruger: LC9, SR22

Sig Sauer: P365

Walther: PPK

AVAILABLE SKUS

BHC-SBL-R
BHC-SBL-L
BHC-SBR-R
BHC-CBR-R
CF-BHC-SBL-R



BH1

1911: Fits 4" and 5" with up to Half Rail (Fits calibers .40, .45, 10mm, and 9mm)

Browning: HP

AVAILABLE SKUS

BH1-SBL-R
BH1-SBL-L
BH1-SBR-R
BH1-CBR-R
BH1-BLB-R
BH1-BLK-R
BH1-VTG-R*
CF-BH1-SBL-R

*Vintage finishes (CVTG & VGT) have limited availability



CF-BH2.1



CF-BH2.3



CF-BH2.4

CF BH

Project Stealth Carbon Fiber Open Top Belt Holster



BH2.1

FN: FNS-9
Glock: 17, 19, 23, 25, 27, 28, 29, 30, 32, 33
Ruger: SR9, SR40, SR22
S&W: MP9, MP40, MP40c, Shield, 5903
Sig Sauer: P225
Springfield: XD9, XD40, XDS, XDE
Taurus: PT111, G2, G2c, 709 Slim
Walther: P99, P22, PPS, CCP

AVAILABLE SKUS

BH2.1-SBL-R
 BH2.1-SBL-L
 BH2.1-SBR-R
 BH2.1-CBR-R
 BH2.1-BLB-R
 BH2.1-VTG-R*
 CF-BH2.1-SBL-R



BH2.3

Beretta: 92FS
CZ: 75, P01, P07, P10
Glock: 17, 20, 21, 40, 41
H&K: P2000
Rock Island: 1911 5" w/rail
Ruger: P95, American
Sig Sauer: P220, P226, 1911 5" w/rail
Springfield: 1911 5" w/rail
Styer: M9-A1
Walther: P99, PPQ

AVAILABLE SKUS

BH2.3-SBL-R
 BH2.3-SBL-L
 BH2.3-SBR-R
 BH2.3-CBR-R
 BH2.3-VTG-R*
 BH2.3-CVTG-R*
 CF-BH2.3-SBL-R



BH2.4

Beretta: M9, 92
CZ: 75
FN: FN5.7, FNX, FNS 40 Longslide, 9 Longslide
H&K: VP tactical, VP40, HK 45, P30L, Mark 23, USP Tactical
Ruger: 3810, 3811, American, Security-9
Sig Sauer: P220, P227, P226, P320, SP2022
Springfield: XD Mod. 2 4"
Walther: PPQ Q4 Tactical, PPQ 45

AVAILABLE SKUS

BH2.4-SBL-R
 BH2.4-SBL-L
 BH2.4-CBR-R
 BH2.4-BLK-R
 CF-BH2.4-SBL-R



BH2.4s

FN: FN509, FNS 40, FNS 40c, FNS 9, FNX 40, FNX 9
H&K: 45c Tactical, P2000, USPc, VP9sk, VP 40, VP9, VP Tactical, P30
Sig Sauer: M11-A1, P229, P229c, P320c
Springfield: XDMc, XDM 3.8", XDM 4.5"
Taurus: TX 22
Walther: PPQ M2, PPX

AVAILABLE SKUS

BH2.4S-SBL-R
 BH2.4S-CBR-R

SCH

Smooth Concealment Holster



The **Smooth Concealment Holster (SCH)** is the most comfortable soft cowhide holster available. Delivering total concealment, it only gets better with age; the more it is worn the more comfortable it becomes as it forms perfectly to you and your firearm.

The SCH delivers a carry experience like no other. Regardless of your firearm preference, the available sizes* accommodate an enormous selection of popular handguns perfectly.

*Sizes listed also include similar frames.



SCH-4

SCH-2



AVAILABLE SKUS

SCH-0-NSB-R
SCH-0-NSB-L

SCH-1-NSB-R
SCH-1-NSB-L

SCH-2-NSB-R
SCH-2-NSB-L

SCH-3-NSB-R
SCH-3-NSB-L

SCH-4-NSB-R
SCH-4-NSB-L

SCH-5-NSB-R
SCH-5-NSB-L

SCH-6-NSB-R
SCH-6-NSB-L

SCH size 0

Beretta: Tomcat 32, Pico 380
Colt: 903 Pocket, Mustang Lite
Kahr: CW380
Kimber: Micro 380, Micro 9
S&W: Bodyguard
Sig Sauer: P238, P938

SCH size 1

Bersa: Thunder 380
Keltec: 380
Ruger: LCP
Sig Sauer: P938
S&W: Bodyguard
Walther: PPK

SCH size 2

Charter Arms: Small Frame Revolvers
Rossi: Small Frame Revolvers
Ruger: LCR
S&W: 38 Special, J-Frame
Taurus: Small Frame Revolvers

SCH size 3

1911: 3 inch models
Bersa: Thunder 380
Glock: 43, 43X, 42
Ruger: LC9, SR22
Sig Sauer: P365
Walther: P22

SCH size 4

CZ: 75
Glock: 17, 19, 22, 23, 25, 26, 27, 29, 30, 31, 32, 33
Ruger: SR9, SR9c, SR40
S&W: MP40, MP9, Shield
Sig Sauer: P228, P229, P239, P225
Springfield: XD9, XD40, XDS, XDE
Taurus: G2, PT111, PT24/7, 709 Slim

SCH size 5

H&K: 45c, P2000USPc, VP9sk
Sig Sauer: M11A1, P229c, P320c
Springfield: XDMc

SCH size 6

1911: 3 and 4 inch models
Browning: HP
Sig Sauer: 1911 5" w/o Rail

RCH size 3

1911: 3 inch models
Bersa: Thunder 380
Glock: 43, 43X, 42
Ruger: LC9, SR22
Sig Sauer: P365
Walther: P22

RCH size 4

Glock: 17, 19, 22, 23, 25, 26, 27, 29, 30, 31, 32, 33
Ruger: SR9, SR9c, SR40
S&W: MP40, MP9, Shield
Sig Sauer: P225
Springfield: XD9, XD40

RCH size 5

CZ: 75
Sig Sauer: P228, P229, P239
Springfield: XDS, XDE
Taurus: G2, P111, PT24/7, 709 slim



RCH-5



RCH-5

AVAILABLE SKUS

RCH-3-BLB-R
RCH-3-BLK-R

RCH-4-BLB-R
RCH-4-BLK-R

RCH-5-BLB-R
RCH-5-BLK-R

RCH

Rigid Concealment Holster



The 1791 Gunleather Rigid Concealment Holster (RCH) provides a sturdy IWB option that allows for one-handed reholstering. Three simple sizes fit a large range of compact to full-sized handguns*. Handcrafted with a finished leather interior that provides snug retention.

The exterior is formed of both a finished leather top to prevent chafing and a soft belly leather bottom to provide comfort and breathability.

*Sizes listed also include similar frames.

BHX

Reinforced Thumb Break Offers More Security



While our open top leather holsters offer excellent retention that can withstand the most rigorous of activities, there will always be those who want more. To satisfy them, 1791 Gunleather offers a **Thumb Break Holster (BHX)** with two distinct cant positions.

The FBI-cant allows for a fast and smooth draw of your firearm, and the back-cant position is intended for faster handgun acquisition, which is especially useful when sitting, driving cars and ATVs, or horseback riding.

Contoured to fit multiple firearm configurations*, the Thumb Break Holster features added barrel room for higher front sights. This model is also available in a variety of colors.

*Sizes listed also include similar frames.



BHX1



BHX4

BHX1

1911: 4 and 5 inch models with half rails

Browning: HP

BHX3

FN: FNS-9

Glock: 17, 19, 23, 25, 27, 28, 29, 30, 32, 33

Ruger: SR9, SR40, SR22

S&W: MP9, MP40, MP40c, Shield, 5903

Sig Sauer: P225

Springfield: XD9, XD40, XDS, XDE

Taurus: PT111, G2, G2c, 709 Slim

Walther: P99, P22, PPS, CCP

BHX4

1911: 4 and 5 inch versions with full rails (non-cocked and locked)
Beretta: 92FS

CZ: 75, P01, P07, P10

H&K: VP9, VP40, P2000

Ruger: P95, American

Styer: M9-A1

Walther: P99, PPQ

AVAILABLE SKUS

BHX-1-CL-SBL-R

BHX-4-SBL-R

BHX-1-CL-SBL-L

BHX-4-SBL-L

BHX-1-CL-SBR-R

BHX-4-SBR-R

BHX-1-CL-CBR-R

BHX-4-CBR-R

BHX-1-CL-SBR-L

BHX-3-SBL-R

BHX-3-SBL-L

BHX-3-SBR-R

BHX-3-CBR-R

BHX5

Ruger: 3810, 3811, American, Security-9

Sig Sauer: P220, P227, P226, P320, SP2022

BHX5s

Beretta: Cougar 8000F

Sig Sauer: M11-A1, P229c, P250, P320 Carry, P320 X-Carry, P320c,

Springfield: XD(M)c

AVAILABLE SKUS

BHX-5-SBL-R

BHX-5-SBL-L

BHX-5-CBR-R

BHX-5S-SBL-R

BHX-5S-SBL-L

BHX-5S-CBR-R

BHT3/4

Glock: 17, 19, 23, 25, 27, 28, 29, 30, 32, 33

Ruger: SR9, SR40, SR22

S&W: MP9, MP40, MP40c, Shield, 5903

Sig Sauer: P225

Springfield: XD9, XD40, XDS, XDE

Walther: P99, P22, PPS, CCP

Taurus: PT111, G2, G2c, 709 Slim

AVAILABLE SKUS

BHT-3-SBL-R

BHT-3-SBL-L

BHT-3-SBR-R

BHT-3-CBR-R

BHT-4-SBL-R

BHT-4-SBL-L

BHT-4-SBR-R

BHT-4-CBR-R



BHT3



BHT4

BHT

Thumb Break OWB/IWB Belt Holsters Delivers Enhanced Retention and Security



The BHT3 delivers all three OWB positions including vertical draw, horizontal small-of-back and cross-draw. The BHT4 allows for four dynamic carry options including IWB using a metal clip and OWB vertical draw, horizontal small-of-back, and cross-draw.



RVH

Revolver Belt Holsters



The 1791 Gunleather **J-Frame, K-Frame, & Z-Frame Revolver Belt Holsters** deliver a comfortable design that securely supports a wide selection of revolvers.

While these holsters are designed to fit a specific frame size, they still provide the multi-fit* capability for which 1791 Gunleather holsters are known. For example, the J-Frame can also fit the Ruger LCR, the K-Frame revolvers can fit some L- and N-Frames, and the Z-Frame is not only capable of fitting S&W's Governor, but also Taurus' Polymer Public Defender.

The holsters are designed to provide excellent retention, with the leather molding tightly around the cylinder.

*Sizes listed also include similar frames.



RVH1



RVH3

RVH1

Charter Arms: Small Frame Revolvers

Rossi: Small Frame Revolvers

Ruger: LCR

S&W: 38 Special, J-Frame

Taurus: Small Frame Revolvers

RVH2

Ruger: GP100

S&W: K Frame, 686

RVH2s

S&W: K Frame 3" barrel

RVH3

S&W: Governor

Taurus: Judge & Public

AVAILABLE SKUS

RVH-1-SBL-R

RVH-1-SBL-L

RVH-1-SBR-R

RVH-1-CBR-R

RVH-1-VTG-R*

RVH-2-SBL-R

RVH-2-SBL-L

RVH-2-SBR-R

RVH-2-CBR-R

RVH-2S-SBL-R

RVH-2S-SBL-L

RVH-2S-SBR-R

RVH-2S-CBR-R

RVH-2S-CVTG-R*

RVH-3-SBL-R

RVH-3-SBR-R

RVH-3-CBR-R

RVHX1

J-Frame Revolvers

Colt: Cobra

Rossi: Small Frame Revolvers

Ruger: LCR

S&W: 38 Special, 638, 642, Bodyguard

Taurus: 85, 856

RVHX2

K and L Frame Revolvers

Ruger: GP100

S&W: 686

RVHX2s

S&W: K and L Frame 3" barrel

RVHX3

S&W: Governor

Taurus: Judge & Public Defender
(Polymer)

RVHX4

S&W: X-Frame

AVAILABLE SKUS

RVHX-1-SBL-R

RVHX-1-CBR-R

RVHX-3-SBL-R

RVHX-3-CBR-R

RVHX-2-SBL-R

RVHX-2-CBR-R

RVHX-4-SBL-R

RVHX-4-CBR-R

RVHX-2S-SBL-R

RVHX-2S-CBR-R



RVHX-1



RVHX-2

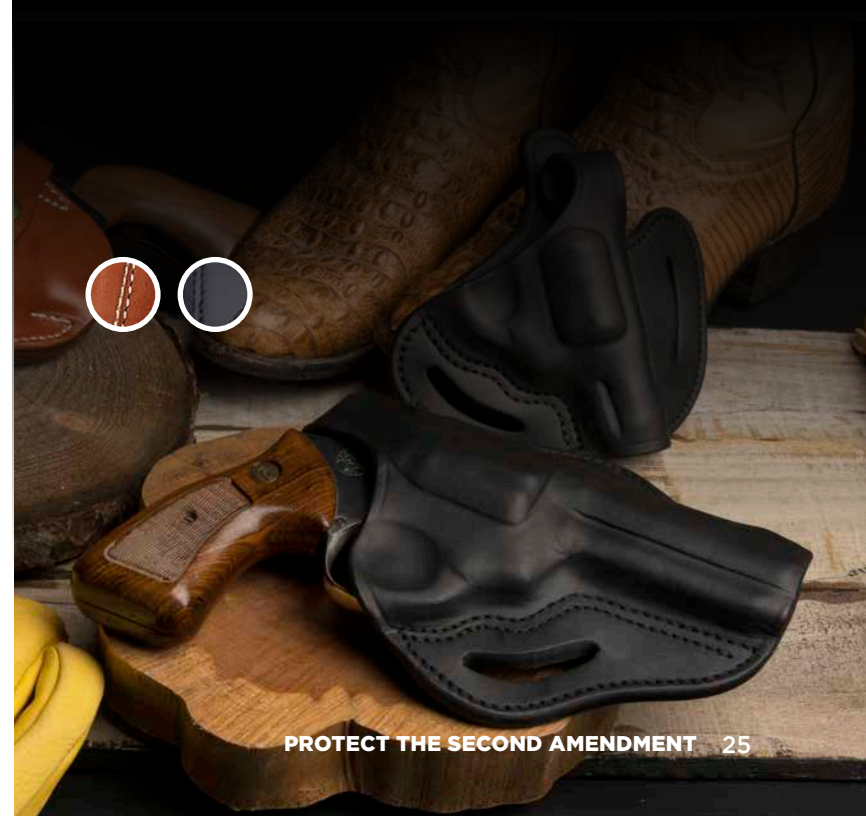
RVHX

Thumbbreak Revolver Belt Holsters

**NEW
FOR
2021**



The all new **RVHX line** provides level 2 retention to our revolver line up. Accommodating small to large frame revolvers of multiple barrel lengths, the RVHX line combines all of the features you expect with a higher level of retention. Handcrafted with certified steerhide, the RVHX is designed for all situations and built to last.



RVH

Single Action Revolver Holsters



Our **Single Action Holster** combines old world leather craftsmanship with the highest quality leather and modern production techniques to provide a fully featured SA holster. Designed to be fully ambidextrous, the SA holster works great in both cross draw and strong side carry.

The holster is crafted from our 100% American certified Steer-Hide leather, which gives it a timeless look and the construction to back it up. It is also equipped with an ambidextrous safety strap that works to keep your firearm firmly in place. Available in both 5.5" and 6.5" variations.

**NEW
FOR
2021**

SA-RVH-6.5



RVH5.5

Cimarron: Pistolero

Colt: SSA, EMF Californian

Heritage: Rough Rider

Ruger: Wrangler, Single Six

Taylors & Company: Cattleman

RVH6.5

Cimarron: Pistolero

Colt: SSA, EMF Californian

Heritage: Rough Rider

Ruger: Wrangler, Single Six

Taylors & Company: Cattleman

AVAILABLE SKUS

SA-RVH-5.5-CBR-A

SA-RVH-6.5-CBR-A



UIW

- Subcompact to large frame handguns
- Handguns with rails
- Firearms equipped with lights and/or lasers

AVAILABLE SKUS

UIW-SBL-A
UIW-CBR-A



UIW-X

- Most large frame handguns
- Handguns with rails
- Firearms equipped with lights and/or lasers

AVAILABLE SKUS

UIW-X-SBL-A
UIW-X-CBR-A



UIW

Built For a Large Variety of Handguns With or Without Rails and Attachments



The Universal IWB/OWB Holsters are the most versatile and multi-fit 1791 Gunleather holsters.

The UIW fits subcompact to full-size handguns*, some of which can be equipped with lights and rails. The UIW-X is designed for larger and more robust frames and firearm accessories.

*Sizes listed also include similar frames.



BH1M1 - BH2.1M1.2

Combo, Open Top Multi-Fit Belt Holster and Built-In Mag Pouch



The 1791 Gunleather **Combo, Open Top Multi-Fit Belt Holster and Built-In Mag Pouch** is perfect for use on duty, on the range, or in the field. The extra carrying capacity and comfortable leather deliver peace of mind and all-day comfort.

This pancake-style holster holds your gun and ammo firmly, using natural pressure between double-stitched steerhide. The open top design and curved, wide-spaced belt loops are optimized for a 1.5" belt to allow a closer ride and more comfortable carry.

The Combo Holster* is available in two sizes, one fits 1911s, and the other mid-size, double stack firearms.

*Sizes listed also include similar frames.



BH1M1



BH2.1M2.1

BH1M1

Browning: HP

Colt: 1911 5"

Kimber: 1911 5"

Rock Island: 1911 5"

Sig Sauer: 1911 5"

Springfield: 1911 5"

Magazines: Metal Single Stack

BH2.1M1.2

Glock: 17, 19, 23, 25, 27, 28, 29, 30, 32, 33

Ruger: SR9, SR40, SR22

S&W: MP9, MP40, MP40c, 5903

Springfield: XD9, XD40

Taurus: PT111, G2, G2

Walther: P99, P22

Magazines: Polymer Double Stack

AVAILABLE SKUS

BH1M1-SBL-R

BH1M1-SBL-L

BH1M1-SBR-R

BH1M1-CBR-R

BH1M1-BLB-R

BH2.1M1.2-SBL-R

BH2.1M1.2-SBL-L

BH2.1M1.2-SBR-R

BH2.1M1.2-CBR-R

BH2.1M1.2-BLB-R

MAG-1.1

One single stack magazine

AVAILABLE SKUS

MAG-1.1-SBL-A	MAG-1.1-BLB-A
MAG-1.1-SBR-A	MAG-1.1-VTG-A*
MAG-1.1-CBR-A	

MAG-1.2

One double stack (polymer) magazine

AVAILABLE SKUS

MAG-1.2-SBL-A	MAG-1.2-CBR-A
MAG-1.2-SBR-A	MAG-1.2-BLB-A

MAG-2.1

Two single stack magazines

AVAILABLE SKUS

MAG-2.1-SBL-A	MAG-2.1-BLB-A
MAG-2.1-SBR-A	MAG-2.1-BLK-A
MAG-2.1-CBR-A	MAG-2.1-VTG-A*

MAG-2.2

Two double stack (polymer) magazines

AVAILABLE SKUS

MAG-2.2-SBL-A	MAG-2.2-BLB-A
MAG-2.2-SBR-A	MAG-2.2-VTG-A*
MAG-2.2-CBR-A	

MAG-F

For metal and polymer double stack magazines

AVAILABLE SKUS

MAG-F-2.2-SBL-A
MAG-F-2.2-SBR-A
MAG-F-2.2-CBR-A



MAG

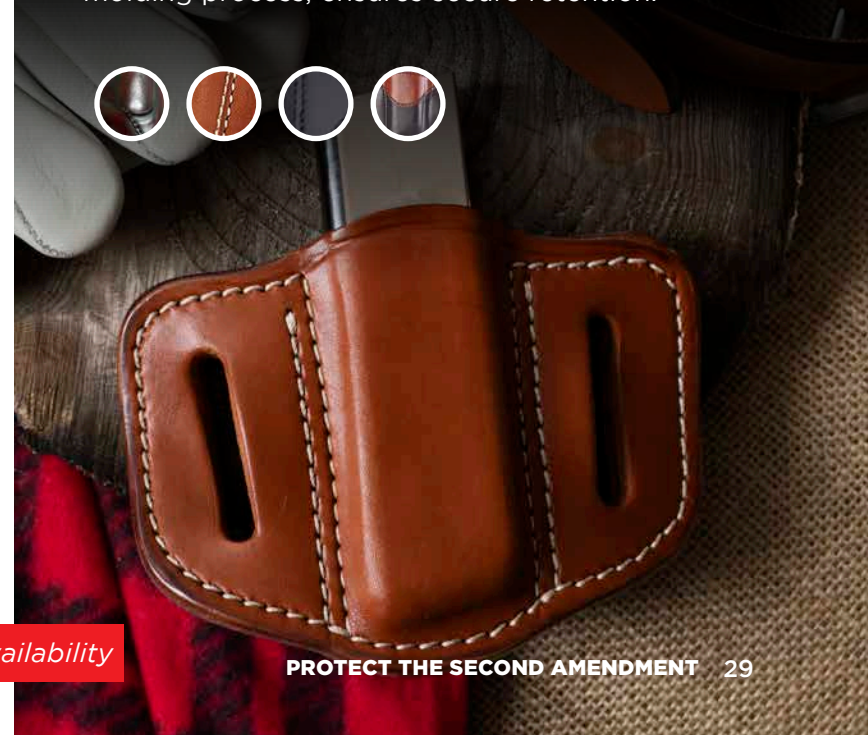
Single and Dual Magazine Carriers for Single and Double Stack Magazines



1791 Gunleather knows the importance of spare magazines, and our Magazine Carriers are designed to cover a variety of carry preferences.

There is a choice of single or dual carriers, which fit single or double stack magazines. Our carriers require no additional retention devices, and the open top design allows quick access to your spare magazines.

The natural friction between two pieces of finely stitched leather, along with the custom wet molding process, ensures secure retention.



**Vintage finishes (CVTG & VGT) have limited availability*

SLG

Heavy Duty Universal Leather Rifle Slings Easy Change Between Rifles



1791 Gunleather **Heavy Duty Universal Rifle Slings** add comfort and ease of use in the field with your long gun. We purposefully designed our sling with a wider width at the shoulder area for better distribution of weight making it extra comfortable to carry.

1791 Gunleather uses only 100% Certified American Heavy Native Steerhide in sling construction. The leather is comfortable, it conforms perfectly to your body, and is a strong natural material that won't degrade over time.

Fits most semi-automatic, single shot, pump action, bolt action, and lever action rifles equipped with standard 1" swivels.

For added luxury and slip-resistant functionality, choose the SLG-1P "Premium" version.



SLG-1P

Width: 2.5" max at widest to 1" min at narrowest

Length: 36" adjusted max to 31" adjusted min

Swivel not included

Premium version has suede slip-resistant backing

SLG

Width: 2.5" max at widest to 1" min at narrowest

Length: 36" adjusted max to 31" adjusted min

Swivel not included

AVAILABLE SKUS

SLG-1P-SBL-A

SLG-1P-CBR-A

SLG-SBL-A

SLG-CBR-A



HOW TO DETERMINE THE CORRECT 1791 GUNLEATHER BELT SIZE

1. If you know your waist size, simply add 4 inches to determine your 1791 Gunleather Gun Belt size.
2. For example, if your waist is 36 inches, add 4 inches for a total 40 inches to equal your 1791 Gunleather Gun Belt size. This allows you to carry up to 2 accessories on your 1791 Gunleather Gun Belt, i.e. a holster and a mag carrier.
3. The following diagram shows how 1791 Gunleather Gun Belts are measured from the start of the leather/buckle to the middle hole tip.



**ALL 1791 GUNLEATHER
HOLSTERS FIT 1.5" BELTS**

STEALTH BLACK	CLASSIC BROWN	WAIST SIZE	GUN BELT SIZE
BLT-01-32/36-SBL-A	BLT-01-32/36-CBR-A	32	36
BLT-01-34/38-SBL-A	BLT-01-34/38-CBR-A	34	38
BLT-01-36/40-SBL-A	BLT-01-36/40-CBR-A	36	40
BLT-01-38/42-SBL-A	BLT-01-38/42-CBR-A	38	42
BLT-01-40/44-SBL-A	BLT-01-40/44-CBR-A	40	44
BLT-01-42/46-SBL-A	BLT-01-42/46-CBR-A	42	46
BLT-01-44/48-SBL-A	BLT-01-44/48-CBR-A	44	48
BLT-01-46/50-SBL-A	BLT-01-46/50-CBR-A	46	50
BLT-01-48/52-SBL-A	BLT-01-48/52-CBR-A	48	52

BLT-01

Heavy Duty Premium Steerhide Gun Belts Designed for Everyday Carry

1791 Gunleather Gun Belts 01 are constructed with full-grain, 14-oz. leather found only on the top and most durable layer of heavy native steerhide. Our premium American heavy native steerhide is not sanded beyond tanning or dyeing, and the detailed process delivers a superior leather that's perfect for rugged working belts.

Designed to meet the highest expectations at an affordable price point, these belts are designed specifically for everyday carry.

Heavy-duty 1791 Gunleather Gun Belts 01 are made to hold all your gear.

Anything you want to carry on your waist from IWB holsters, OWB holsters, flashlights, mag pouches, knives, hammers, tape measures, and multi-tools are options. These belts are discreet and comfortable for concealed carry, and they're built to last.





GUNLEATHER

Need Assistance?
Call customer service at
1 (800) 407-1791
or E-mail us at
contact@1791gunleather.com

1835 NW 21st Terrace
Miami, Florida 33142 U.S.A.

Follow us

